



# Pro Series Wi-Fi User guide

**Rinnai**

---

# Wi-Fi control

---

The Rinnai Pro Series come with Wi-Fi capability as standard, which features Wi-Fi control via an App.

Simple to activate and easy to use, the 'NetHome Plus' App can be downloaded via Google Play or the App store on a compatible mobile device.

Once installed and registered, you can operate your appliance on the go. Basic functions like ON/OFF, temperature control, and fan speed can be accessed through the App.

Best of all, the Wi-Fi control allows you to switch on your Pro Series from outside the home, creating the ultimate in convenience and comfort.

For more information about buying, using, and servicing of Rinnai appliances call: 0800 RINNAI (0800 746 624).

Rinnai New Zealand Limited  
105 Pavilion Drive, Mangere, Auckland  
PO Box 53177, Auckland Airport, Auckland 2150

Phone: (09) 257-3800  
Email: [info@rinnai.co.nz](mailto:info@rinnai.co.nz)  
Web: [rinnai.co.nz](http://rinnai.co.nz)  
[youtube.com/rinnainz](https://youtube.com/rinnainz)  
[facebook.com/rinnainz](https://facebook.com/rinnainz)

---

# Contents

---

Overview.....	4
User registration .....	5
Device setup - using scan for nearby devices .....	6
Device setup - using manual setup .....	8
Special App features.....	10



NetHome plus is a third party App not run by RInnai.

For this App to run the home's Internet router must be running on 2.4 GHz (not 5 GHz), check the Wi-Fi settings on your device.

# Overview

Your home's Internet router relays requests from the App to control your air conditioner just like your normal remote controller.

Set your favourite temperature before you come home.

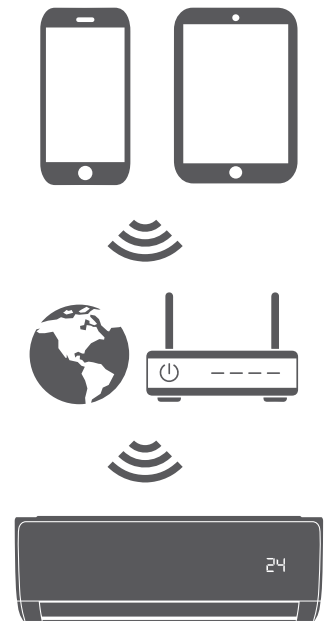
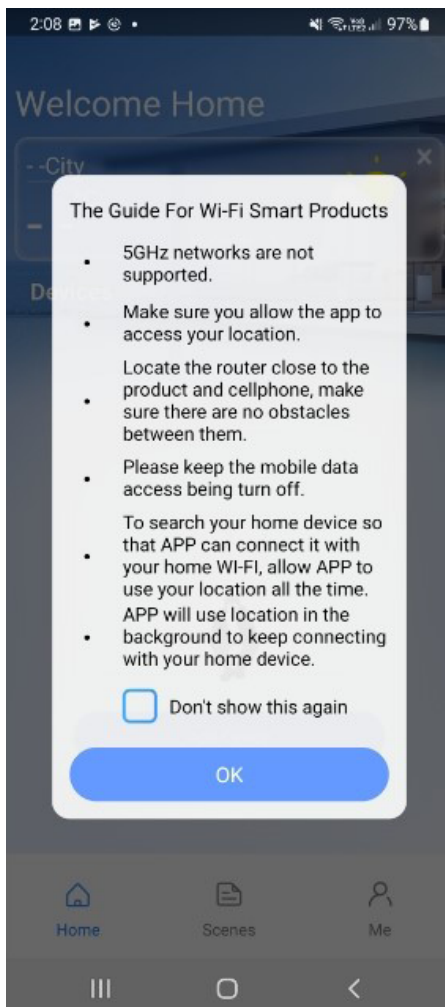
The steps to register and connect are:

1. Download and install the NetHome Plus App on a compatible mobile device.
2. Complete the App registration by creating an account, this must be done in the home where the Pro Series unit is.
3. Pair your mobile device to the Pro Series unit via the home router.

## Important

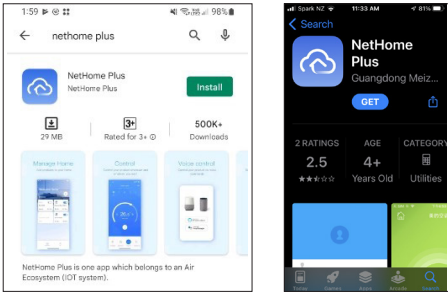
When connecting the device you must finish all the steps within eight minutes after powering on the unit, otherwise you'll need to switch the unit off and on again and go through the process again.

## Additional App tips for successful connection

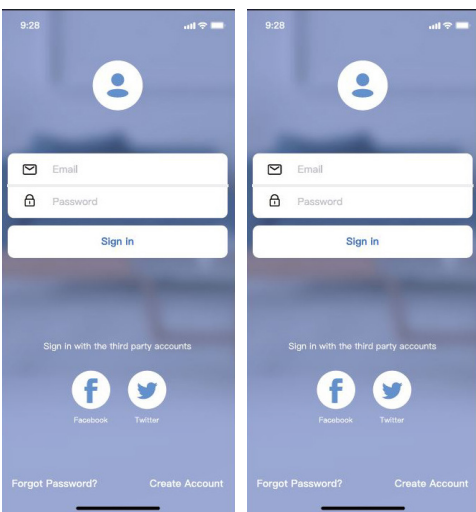


# User registration

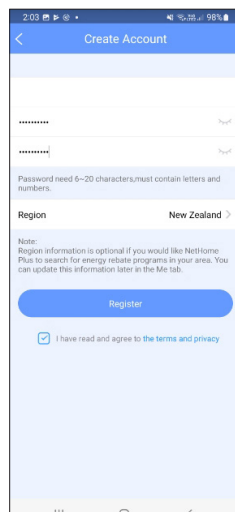
Download the NetHome plus app from Google Play or the App Store.



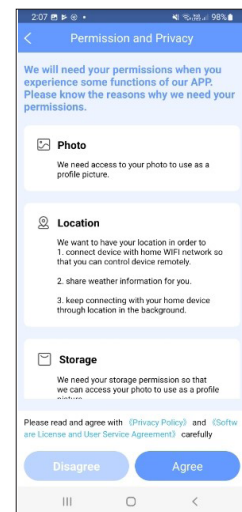
Before opening the App ensure your mobile device is connected to the wireless router and that the router is on before doing your user registration and network configuration.



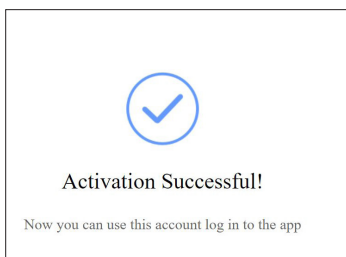
1. Open the App and sign in.



2. Create account, select region, tick terms and privacy, and click on 'Register'.



3. Agree permission and privacy. It looks like it wants to take over, but in the App it will ask permission before accessing camera, location etc.

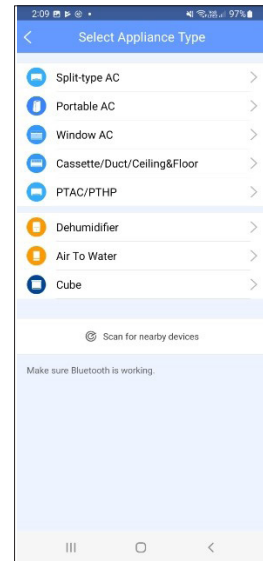
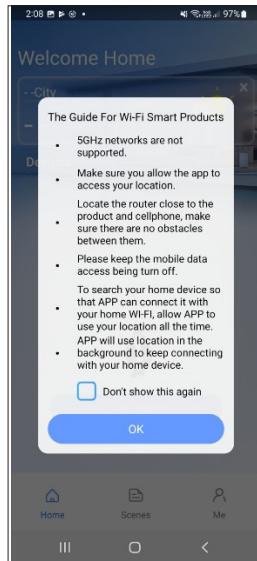
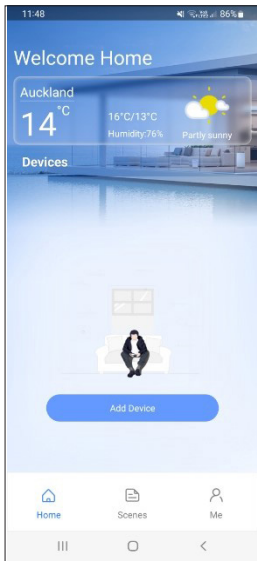


iot1@annto.com Hi, please activate your account to complete the registration

4. Once 'Agree' is selected in the previous step you will receive an email from **iot1@annto.com** with the subject 'Hi, please activate your account to complete the registration'. The email will contain a long URL link to activate your account. Once this has been clicked you will receive an 'Activation Successful' message. Registration is now complete. The next step will be to pair your mobile device to the Pro Series unit.

# Device setup - using scan for nearby devices

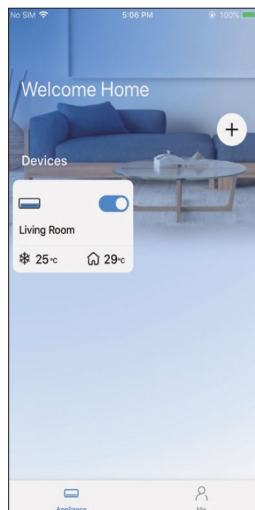
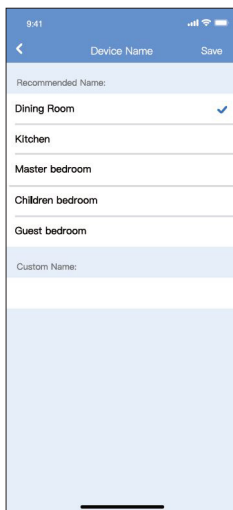
This setup processes uses Bluetooth to locate and configure the device.



**1.** Open the App, this should take you to the 'Welcome Home' screen to setup your Pro Series. Select 'Add Device'.

**2.** Read the guide information to make sure there are no barriers to setup and click OK.

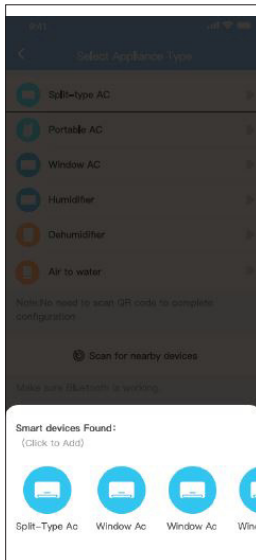
**3.** Try using the easier option of 'Scan for nearby devices'.



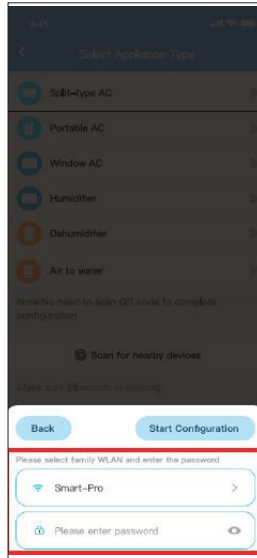
**7.** Choose an existing name/ location or customise with a new name.

**8.** Bluetooth network configuration is successful, you should now see the Pro Series device in the Welcome Home screen.

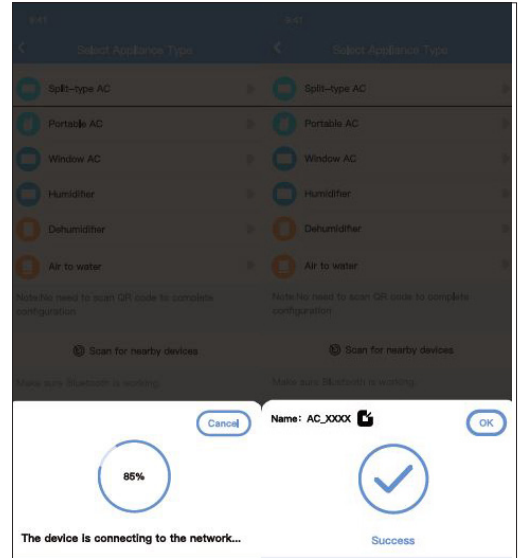
If the Bluetooth network configuration fails please go through the manual setup process by selecting the appliance type. Refer p.8.



4. The Pro Series is a Split-Type Ac, click to add.

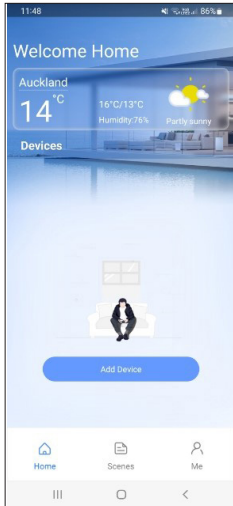


5. This screen will display the home wi-fi, in this example 'Smart-Pro', enter the home wi-fi password and 'Start Configuration'.

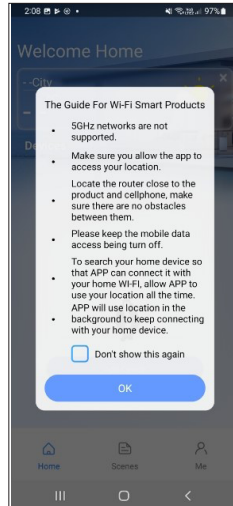


6. Configuration screens

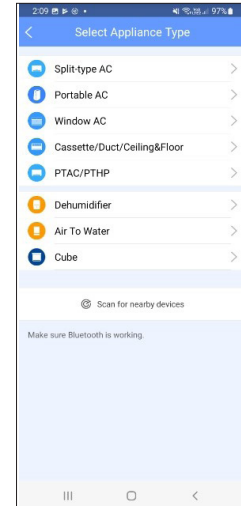
# Device setup - using manual setup



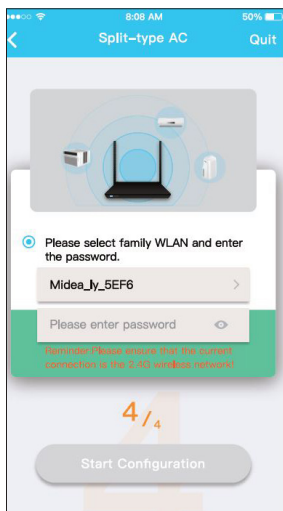
1. Open the App, this should take you to the 'Welcome Home' screen to setup your Pro Series. Select 'Add Device'.



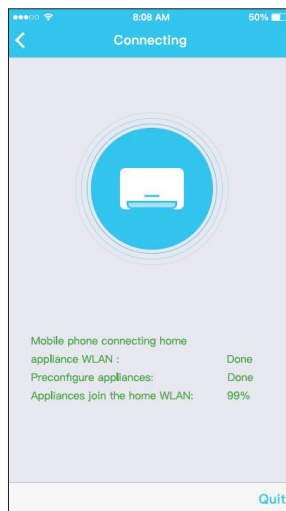
2. Read the guide information to make sure there are no barriers to setup and click OK.



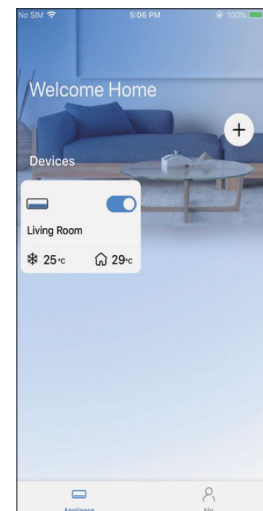
3. Click 'Split-type AC', which is what the Pro Series is.



7. Select the home wi-fi and enter the wi-fi password.



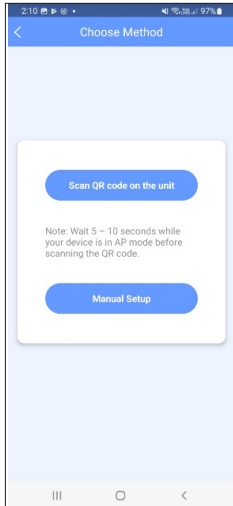
8. If you see this screen the network configuration is successful.



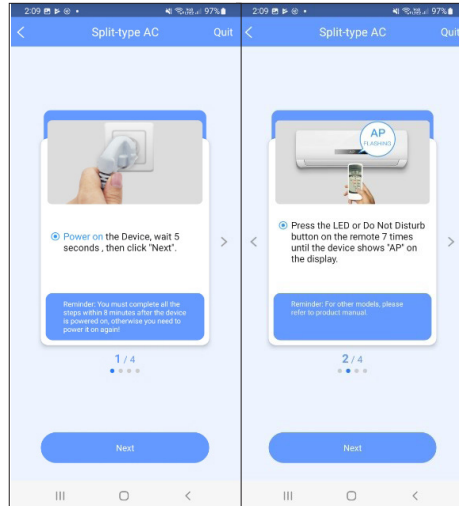
9. Configuration success, you can see the device in the list.

There is a possibility that the device status may still show as being offline. If this occurs turn off the Pro Series unit and then turn it on again. The unit status should come online after a few minutes.



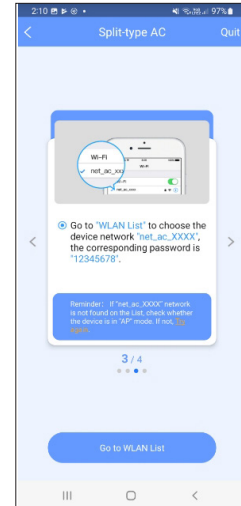


4. Choose 'Manual Setup'.



5. Turn the Pro Series on, wait for five seconds and select 'Next'.

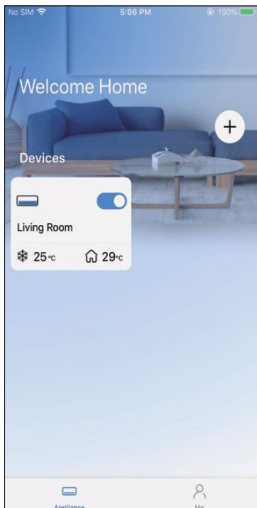
Press the LED button on the controller 7 times until 'AP' flashes in the digital display. Disregard 'Do Not Disturb', this is N/A for the Pro Series.



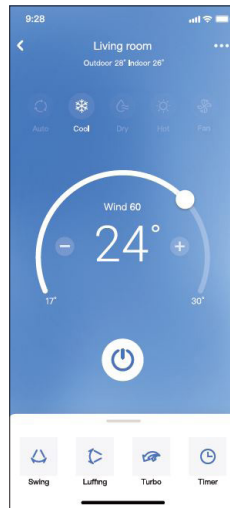
6. Click 'Go to WLAN List'.

**N.B:** Andorid and iOS screens will look different during this part of the process.

## Using the App



Open the App.



When you select the device you will get a screen that looks something like this. You can access more features by selecting the different features in the top of the screen.

Luffing in this example is a fancy way of saying up or down (vertical louvre).

The App should be straightforward and intuitive to use. The screen-grabs on the following pages show some of the special functions.

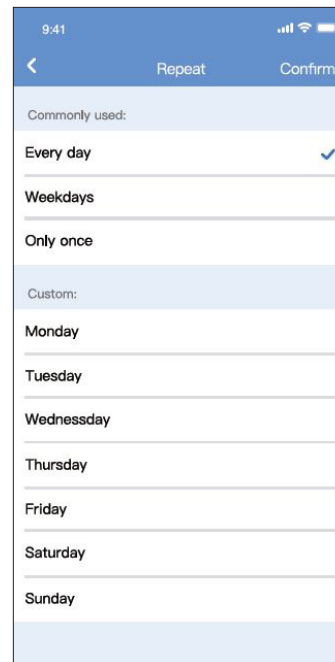
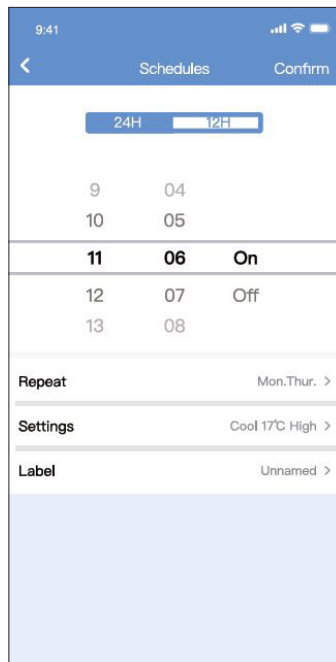
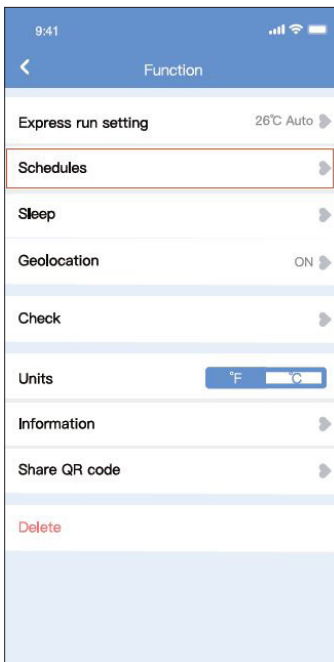
### Standard App features

On/Off	Set temperature
Mode function	Fan speed adjustment
ECO mode	Left and right swing function
Upper and lower swing function	°C / °F switch
Self cleaning	Upper and direct blow
Turbo	

# Special App features

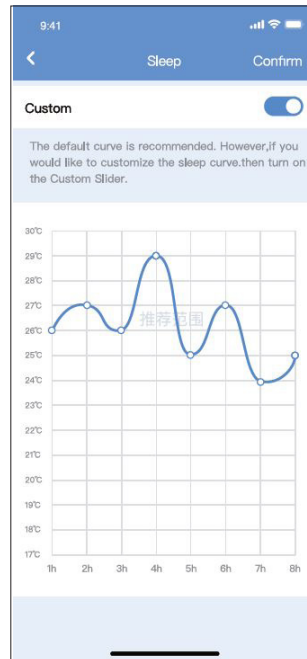
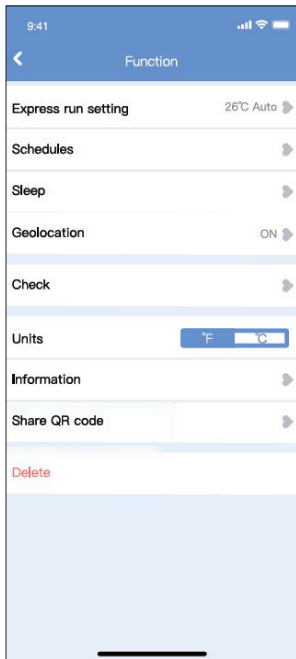
## Schedule (timers)

There are multiple options to set timer schedules.



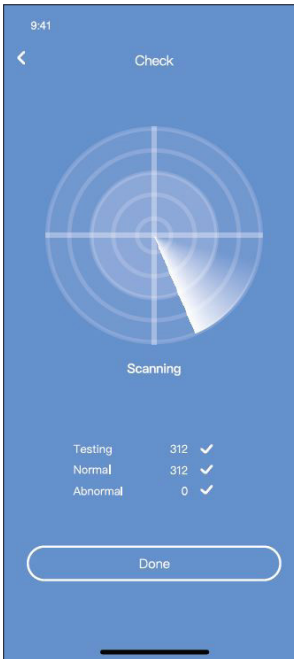
## Sleep

This function gently regulates the set temperature to prevent excessive, draft free, heating or cooling during sleep. It allows the set temperature to increase or decrease 0.5-1 °C in an hour, up to a maximum of 2 °C above or below the set point (over a 10 hour period).



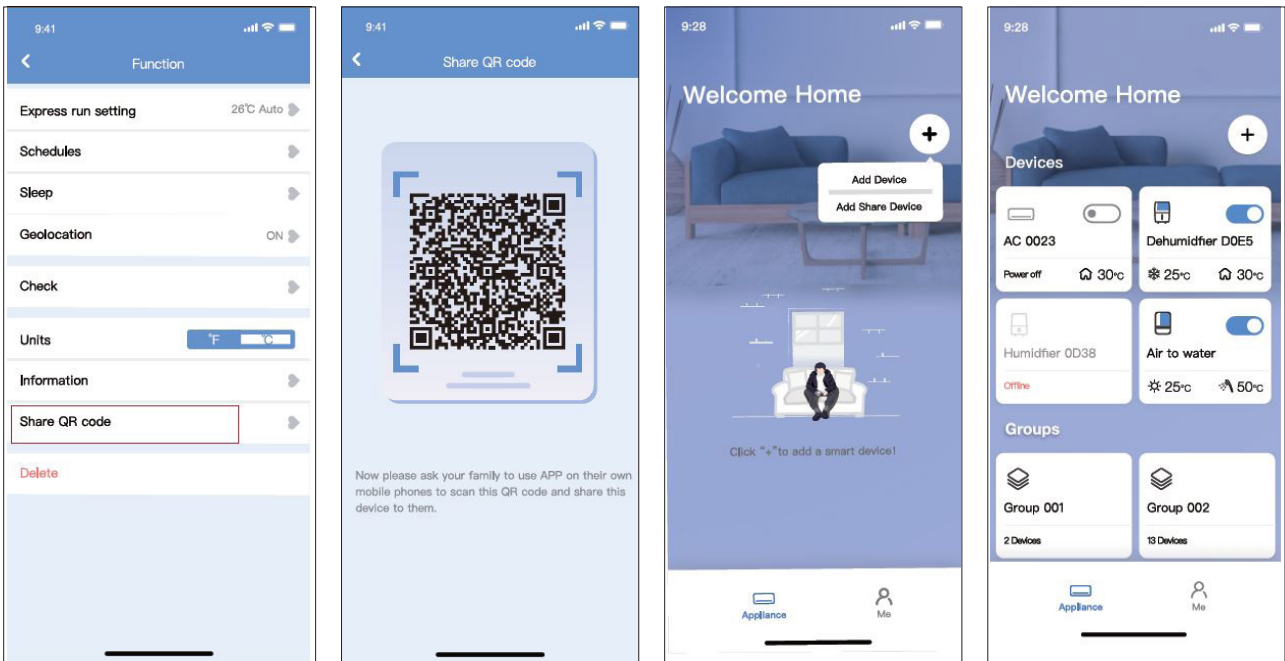
## Check

Allows you to check the status of the unit. When completed it will highlight if there is anything abnormal with the system.



## Share device

The system can be controlled by multiple users (maximum of 20) at the same time using the 'Share QR code' function.



Other users must download the NetHome Plus App and register. When they get into the 'Welcome Home' screen they need to click on the + button and click 'Add Share Device'. They can then scan the QR code

**Rinnai.co.nz**

Tel: 0800 746 624  
<http://www.youtube.com/rinnainz>  
<http://facebook.com.rinnainz>

Pro Series Wi-Fi control user guide A